

# QUASAR

## Intelligent optical sorter

- High-Resolution cameras
- Advanced SWIR infra-red sensors
- True-Shape technology
- Advanced kernel feature analysis
- Higher throughput
- Sniper Ejector Logic
- New user interface
- IP65 rating



# ASM QUASAR

## The Intelligent optical sorter



The ever-stringent quality standards are creating new technical challenges for big and small businesses alike. Helping our customers increase final quality has been the main drive behind the development of Sesotec ASM's sorting technology and lead to the creation of an entirely new optical sorting machine, designed specifically to meet the new challenges in quality control: the ASM QUASAR.

### Total accuracy

We developed a completely new optical processing architecture called Logic, which is the heart of the machine. This is a combination of very powerful hardware and advanced software algorithms, that closely mimic how the human brain processes visual information.

QUASAR judges many different parameters at the same time, including colors, textures, shapes and size. Because QUASAR judges all of these parameters as a whole, rather than one by one, it is very accurate in deciding what to keep or reject, and incredibly easy to use.

Model	Width	Height	Depth
QUASAR 1000	1910 mm	1821 mm	895 mm
QUASAR 2000	1910 mm	1821 mm	1368 mm
QUASAR 3000	1910 mm	1821 mm	1670 mm
QUASAR 4000	1910 mm	1821 mm	2068 mm
QUASAR 5000	1910 mm	1821 mm	2414 mm
QUASAR 6000	1910 mm	1821 mm	2820 mm

### Performance features

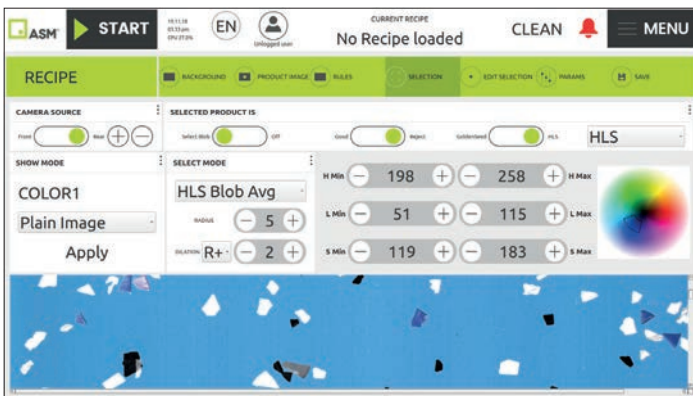
- **High-Resolution** cameras with **True-Color** image processing technology.
- **Advanced SWIR infra-red** sensors can sort defects based on physical and organic characteristics.
- **True-Shape** technology **differentiates objects by shape and size**, at high speed.
- **Advanced kernel feature analysis** opens new sorting possibilities.
- **Higher throughput** thanks to a dedicated, **upgradable** optical processing architecture with **high-speed image analysis**.
- **Sniper Ejector Logic** **reduces product loss** to a bare minimum by dynamically adjusting ejector activity according to contaminant type.
- **Even easier to use**, with a new user interface and intelligent-learning features.
- **IP65 rating**, fully dust-proof and water resistant, built for reliability in the most demanding environments.





# Examples

## Simplified user interface



## Tap to sort: create a sorting program in 5 minutes

Thanks to the Intelligent-Learning System, creating a program is as simple as taking a snapshot of a contaminated product sample. The machine takes a picture of the product as it falls, the user can then tap with a finger the defects to be removed. QUASAR does the rest, by dynamically creating the correct sorting parameters in order to achieve the best sorting results.

## Higher throughput, increased yield

QUASAR has the widest chutes on the market, paired with lightning-fast processing speed and unprecedented ejector accuracy. It can sort even the smallest products with minimal false-rejects. Available in models from 1 up to 6 chutes, to satisfy any production need.

## Minimal operational costs

Quality construction, energy-efficiency, ease of use and incredible accuracy: these are the qualities that make QUASAR a leader not only in performance, but in cost-effectiveness too. QUASAR provides a higher yield, higher throughput and increased up-time in a single, reliable sorting solution.



**Sesotec ASM S.r.l.**

Via della Tecnica 3/2  
40050 Argelato (BO)  
Italy  
Tel. +39 51 05 46 940  
Fax +39 51 89 73 86  
info.asm@sesotec.com  
www.sortingasm.com

**Sesotec GmbH**

Regener Straße 130  
D-94513 Schönberg  
Germany  
Tel. +49 8554 308-0  
Fax +49 8554 2606  
info@sesotec.com  
www.sesotec.com

**Operating Companies:**

 **Sesotec ASM S.r.l.**  
Bologna  
Italy  
info.asm@sesotec.com  
www.sortingasm.com

 **Sesotec Inc.**  
Bartlett  
USA  
info@sesotec.us  
www.sesotec.us

 **Sesotec Canada Ltd.**  
Cambridge  
Canada  
info@sesotec.us  
www.sesotec.ca

 **Sesotec Pte. Ltd.**  
Singapore  
info@sesotec.com.sg  
www.sesotec.com.sg

 **Sesotec Pvt. Ltd.**  
Pune  
India  
info.india@sesotec.com  
www.sesotec.com

 **Sesotec Shanghai Co. Ltd.**  
Shanghai  
China  
enquiry@sesotec.com.cn  
www.sesotec.com.cn

 **Sesotec Thailand Ltd.**  
Bangkok  
Thailand  
info@sesotec.com  
www.sesotec.com

**... and more than 40 agencies worldwide**

# Sesotec system world



**Detecting and separating contaminants:**

- Removing contaminants:
- metals
  - plastics
  - glass
  - ceramics, porcelain, stones
  - and many others

- Removing from (good material):
- bulk materials
  - liquids and pastes
  - individually packaged product
  - packed and loose items

- Product types:
- end-products (food, textiles, plastics etc)
  - industrial raw materials
  - recycled materials

can be integrated into all types of conveyor systems



**Detecting and separating sub-standard products:**

- Qualitative defects:
- incorrect colour
  - agglomerations
  - breakages
  - air inclusions in packs
  - incorrect positioning / distribution

- Quantitative defects:
- incorrect weight
  - count errors (incorrect number of items in package)

- Product types:
- end-products (food, textiles, plastics etc)
  - industrial raw materials
  - recycling materials

can be integrated into all types of conveyor systems



**Sorting mixed materials into single fractions:**

- Types of material:
- glass
  - plastics
  - metals
  - and many others

- Delivery flows:
- bulk materials
  - individually packaged product

- can be integrated into:
- conveying systems
  - bulk material flows

For further information or to discuss your particular application contact one of our specialists.

[www.sesotec.com](http://www.sesotec.com)



**Choose the Original  
Choose Success!**